

GT-VM Velocity Sensor



Features

- Wide Full Scale Range, ± 10 kine
- Bandwidth 1Hz to 315 Hz
- Built-in Impulse Test Circuit
- Single Bolt Mounted Housing provides up to $\pm 10^\circ$ of levelling adjustment
- Applications: Civil engineering,
- Vibration measurement
- Also available as Borehole Version

Description

The GTV-3 Velocity Sensor is engineered for consistent performance over a long lifetime. Advanced computerized testing, manufacturing techniques and quality control are used in the production process to provide both, the uniform parameters and the rugged qualities required in modern velocity sensors.

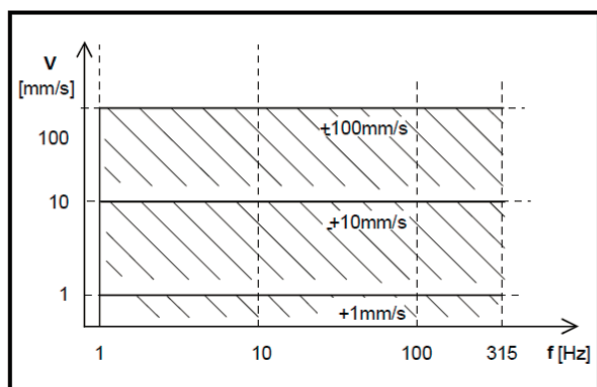
The sensor module has proven itself successfully world-wide for many years in different applications. The symmetrical rotating dual coil construction minimizes the force on the spring arms. The use of precious metals ensures optimum electrical contact and a long operating life.

The GTV-3 Velocity Sensor is a triaxial velocity sensor, operates from a wide range of input voltages and could be used for a variety of civil engineering and general vibration measurement applications.

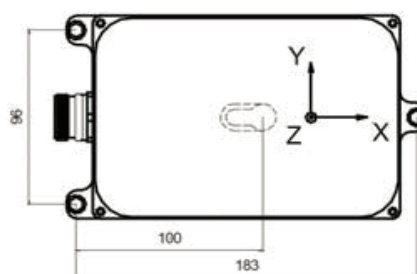
The GTV-3 Velocity Sensor is housed in a very compact 193 x 112 x 94 mm case. The sealed cast aluminum housing contains a MS style connector or a sealed cable inlet. The housing also incorporates a single bolt mount with three levelling screws, which offers extended adjusting capability during mounting.

Technical Specifications

Application	Civil Engineering, Vibration Measurement
Full Scale Range	± 10 kine
Instrument Type	Digital grade long travel geophones
Dynamic Range	>96 dB or better
Linearity	<0.3% of full scale
Cross Axis Sensitivity	<0.1% of full scale
Frequency Response	1 to 315 Hz
Damping	standard 0.7
Full Scale Output	standard 0 ± 10 V differential, optional 2.5 ± 2.5 V single ended, 0 ± 5 V differential
Output Impedance	<50 Ω
Self-Test	Impulse Test
Supply Voltage	9 to 12 VDC
Supply Current	1.2 mA per axis



Measuring Range



Triaxial: x, y (horizontal); z (vertical)

Environment / Housing

Housing Type	Cast aluminum, Sealed access cover
Housing Size	193 x 112 x 94mm
Weight	2.0 kg
Index of Protection	IP 66
Temperature Range	-25 to 85°C(operating), -40 to 100°C(storage)
Humidity	0 to 100%(non-condensing)
Mounting	Surface mounted, Single bolt fixing
Levelling	Three leveling screws, $\pm 10^\circ$ range
Standard GTV-3	Floor mounted, 2 m cable with sensor mating connector