

CS250DM

PT-1000 Class A,
Precision Air
Temperature Sensor



Table of contents

1. Introduction	1
2. Precautions	1
3. Initial inspection	1
4. QuickStart	1
5. Overview	4
6. Specifications	5
7. Installation	7
7.1 Wiring	7
7.2 Programming	8
7.2.1 Modbus programming	8
7.3 Siting	9
7.4 Installation in a radiation shield	11
7.5 Mount the shield	12
7.6 Long cable lengths	12
7.7 Modbus register map	12
7.8 Device Configuration Utility	14
8. Maintenance and troubleshooting	15
8.1 Maintenance	16
8.2 Troubleshooting	16
Appendix A. Importing Short Cut code into CRBasic Editor	17

1. Introduction

The CS250DM delivers extremely accurate and precise air temperature data necessary for IEC 61724 Class A solar monitoring applications and delta temperature (ΔT) calculations for temperature gradient and stability analysis.



2. Precautions

- READ AND UNDERSTAND the [Safety](#) section at the back of this manual.
- When opening the shipping package, do not damage or cut the cable jacket. If damage to the cable is suspected, consult with a Campbell Scientific support engineer.
- Although rugged, the CS250DM should be handled as a precision scientific instrument.

3. Initial inspection

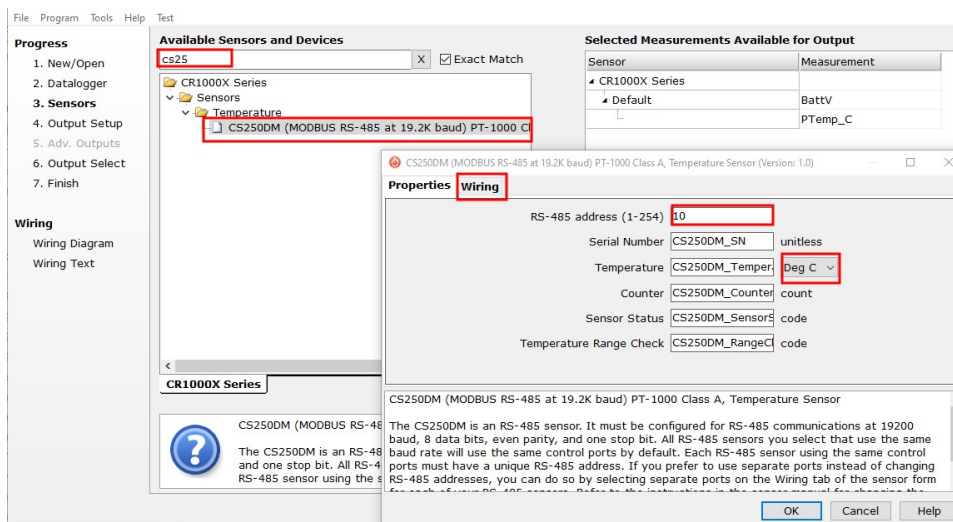
- Upon receipt of the CS250DM, inspect the packaging and contents for damage. File damage claims with the shipping company.
- The model number, cable length, Modbus address, and serial settings are printed on a label at the connection end of the cable. Check this information against the shipping documents to ensure the expected product and cable length were received.

4. QuickStart

A video that describes data logger programming using **Short Cut** is available at: www.campbellsci.com/videos/cr1000x-data-logger-getting-started-program-part-3 . **Short Cut** is an easy way to program your data logger to measure the sensor and assign data logger wiring terminals. **Short Cut** is available as a download on www.campbellsci.com . It is included in installations of **LoggerNet**, **RTDAQ**, and **PC400**.

The following procedure also shows using **Short Cut** to program the CS250DM.

1. Open *Short Cut* and click **Create New Program**.
2. Double-click the data logger model.
3. In the **Available Sensors and Devices** box, type CS250DM. You can also locate the sensor in the **Sensors > Temperature** folder. Double click the sensor model. Type the **RS-485 address**; default address is printed on the cable. The RS-485 address must be unique and may need to be changed if another sensor on the terminal has the same address. Refer to [Device Configuration Utility](#) (p. 14) for information on changing the address. The temperature defaults to degree C. This can be changed by clicking the **Temperature** box and selecting one of the other options.



- Click on the **Wiring** tab to see how the sensor is to be wired to the data logger. Click **OK** after wiring the sensor.

CS250DM (19.2K)	CR1000X Series
Brown	12V
Blue	C5
White with Blue Stripe	C6
Clear	G
Green	G
White with Brown Stripe	G

Click a CR1000X Series terminal name to change a wire's location.

CS250DM (MODBUS RS-485 at 19.2K baud) PT-1000 Class A, Temperature Sensor

The CS250DM is an RS-485 sensor. It must be configured for RS-485 communications at 19200 baud, 8 data bits, even parity, and one stop bit. All RS-485 sensors you select that use the same baud rate will use the same control ports by default. Each RS-485 sensor using the same control ports must have a unique RS-485 address. If you prefer to use separate ports instead of changing RS-485 addresses, you can do so by selecting separate ports on the Wiring tab of the sensor form for each of your RS-485 sensors. Refer to the instructions in the sensor manual for changing the RS-485 address and serial communications configuration options.

OK Cancel Help

- Repeat steps three and four for other sensors you want to measure. Click **Next**.
- In **Output Setup**, type the scan rate, a meaningful table name, and the **Data Output Storage Interval**.

Short Cut (CR1000X Series) C:\Campbellsc\SCWin\untitled.scw

File Program Tools Help Test

Progress

1. New/Open
2. Datalogger
3. Sensors
- 4. Output Setup**
5. Adv. Outputs
6. Output Select
7. Finish

Wiring

Wiring Diagram

Wiring Text

How often should the CR1000X Series measure its sensor(s)? 60 Seconds

Data is processed by the datalogger and then stored in an output table. Two tables are defined by default; up to 10 tables can be added. Add New Table

1 Hourly 2 Daily

Table Name Hourly Delete Table

Data Output Storage Interval

Makes 60 measurements per output interval based upon the chosen measurement interval of 60 Seconds. 60 Minutes

Copy to External Storage

☐ SC115 Flash Memory Drive

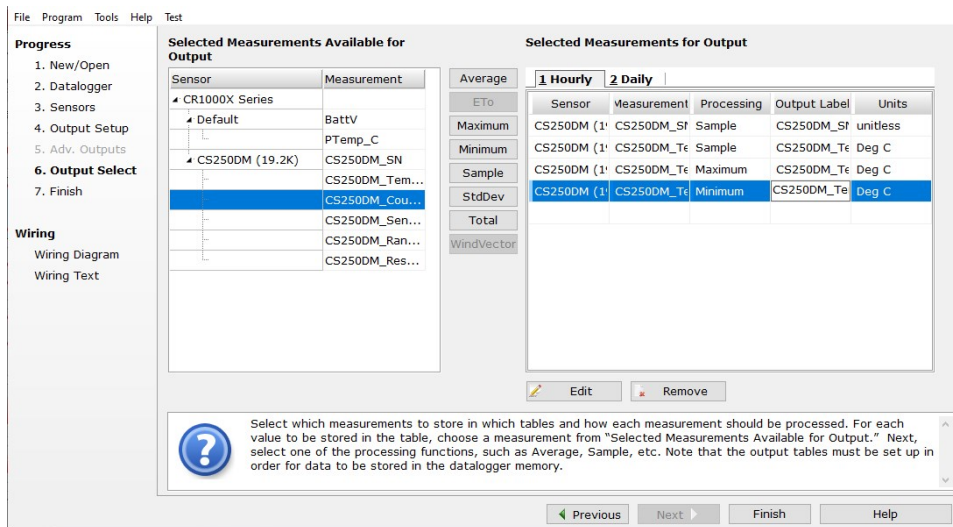
☒ Memory Card

☐ Advanced Outputs (all tables)

Specify how often measurements are to be made and how often outputs are to be stored. Note that multiple output intervals can be specified, one for each output table. By default, an output table is set up to send data to memory based on time. Select the Advanced Output option to send data to memory based on one or more of the following conditions: time, the state of a flag, or the value of a measurement.

Previous Next Finish Help

7. Select the measurement and its associated output option.



8. Click **Finish** and save the program. Send the program just created to the data logger if the data logger is connected to the computer.
9. If the sensor is connected to the data logger, check the output of the sensor in the data display in **LoggerNet**, **RTDAQ**, or **PC400** to make sure it is making reasonable measurements.

5. Overview

The CS250DM uses a precision PT-1000 class A platinum resistor thermometer (PRT) to provide the highest level of accuracy. The cable includes a Campbell Scientific precision analog-to-digital, smart-sensor module for making the measurements. The module design is optimized for the class A PRT that minimizes self-heating and lead-wire resistance. Measurement electronics are surge protected with 1200 V isolation and environmentally protected with a rugged overmolding with an IP65 rating.

When exposed to sunlight, the CS250DM should be housed in the 41303-5A 6-plate radiation shield or RAD06 6-plate radiation shield.



Features:


- High accuracy and precision
- Exceeds IEC 61724-1 standards for ambient air temperature measurements
- Exceeds EPA standards for ΔT measurements when used with an aspirated radiation shield
- Digital Modbus RS-485 output ensuring data quality over long cable lengths
- Compatible CRBasic data loggers: CR6, CR1000X, CR3000 (with MD485), CR800 series (with MD485), CR300 series (with MD485), CR1000 (with MD485),
- Easily interfaces with the MeteoPV Platform without coding
- Directly connects with Modbus RTU RS-485 Networks

6. Specifications

Sensing element:

Precision:	1000 ohm Class A platinum (PT1000)
Accuracy:	$\pm (0.15 + 0.002t) ^\circ\text{C}$
Long-term stability:	Maximum R_0 drift = 0.04% after 1000 hours at 400 $^\circ\text{C}$
Measurement temperature range:	-75 to $+250$ $^\circ\text{C}$
Time constant:	15 seconds in 5 m/s wind

Measurement uncertainty:	$\pm (0.15 + 0.002t) ^\circ\text{C}$
Element stem material:	316L Stainless Steel sheathed
Surge protection:	1200 V isolation
Supply voltage:	5 to 30 VDC
Power consumption:	15 mA
Temperature coefficient:	TCR = 3850 ppm/K
Communications	24-bit ADC
Protocol:	Modbus RTU protocol (over RS-485)
Format:	8 data bits, 1 stop bit, even parity as default (user-configurable)
Baud rate:	19,200 bps as default (user-configurable)
Modbus ID:	Last two digits of serial number as default (user-configurable)
Stem diameter:	0.32 cm (0.125 in)
Overall stem length:	6.35 cm (2.5 in)
Cable (Sensor head to DM board)	
Wire size and type:	24 AWG (7/32,RT38) copper
Insulation type:	PFA insulated (Teflon®)
Insulation rating:	-75 to +250 °C
Sheath:	Thin PFA sheathed overall
Number of cores:	3
Physical properties:	Good abrasion and moisture resistance
Overall diameter:	2.1 mm (0.08 in)
Sensor dimensions:	17.2 x 11.1 x 6.1 cm (6.8 x 4.4 x 2.4 in)
Cable (DM board to PT)	
Wire size and type:	24 AWG (7/32) tinned copper
Insulation type:	PVC
UL:	AWM 10012 1000V 105°C
Filler:	Fibrillated polypropylene as required for uniform round construction

Drain:	24 AWG (7/32) tinned copper (cabled, touching foil)
Shield:	Aluminum/Mylar (100% coverage, 25% minimum overlap, foil facing in)
Nominal wire diameter:	0.61 mm (0.024 in)
Weight:	90.7 g with 3.2 m cable (0.2 lb with 10.5 ft cable)
Compliance:	View documents at: www.campbellsci.com/cs250dm 

7. Installation

If you are programming your data logger with *Short Cut*, skip [Wiring](#) (p. 7), and [Programming](#) (p. 8). *Short Cut* does this work for you. See [QuickStart](#) (p. 1), for a *Short Cut* tutorial.

This section discusses the following.

7.1 Wiring	7
7.2 Programming	8
7.3 Siting	9
7.4 Installation in a radiation shield	11
7.5 Mount the shield	12
7.6 Long cable lengths	12
7.7 Modbus register map	12
7.8 Device Configuration Utility	14

7.1 Wiring

The RS-485 output can be directly read by a MeteoPV, CR6, CR1000X, or Modbus RTU RS-485 network ([Table 7-1](#) (p. 8)). Other Campbell Scientific data loggers can use an MD485 multidrop interface to read the RS-485 output. Refer to the MD485 manual for more information. The Modbus address must be unique and may need to be changed if another sensor on the bus has the same address. Change the Modbus address using the *Device Configuration Utility* or through

Modbus commands. For more information, refer to [Device Configuration Utility](#) (p. 14) or [Modbus register map](#) (p. 12).


Table 7-1: Wire Color, Station Connection, and Function		
Wire color	Station or data logger terminal	Function
Blue	A– (C odd)	RS-485 A/A' [–]
White/blue striped	B+ (C even)	RS-485 B/B' [+]
Brown	12V	5 to 30 VDC
White/brown striped	G	Ground (power)
Green	G	Modbus common
Clear	G	Shield

7.2 Programming

Short Cut is the best source for up-to-date programming code for Campbell Scientific data loggers. If your data acquisition requirements are simple, you can probably create and maintain a data logger program exclusively with **Short Cut**. If your data acquisition needs are more complex, the files that **Short Cut** creates are a great source for programming code to start a new program or add to an existing custom program.

NOTE:

Short Cut cannot edit programs after they are imported and edited in **CRBasic Editor**.

A **Short Cut** tutorial is available in [QuickStart](#) (p. 1). If you wish to import **Short Cut** code into **CRBasic Editor** to create or add to a customized program, follow the procedure in [Importing Short Cut code into CRBasic Editor](#) (p. 17). Programming basics for CRBasic data loggers are provided in the following section. A downloadable example program is available at www.campbellsci.com/downloads/cs250dm-program-example .

7.2.1 Modbus programming

The RS-485 output can be directly read by a CR6-series, CR1000X-series, or Modbus RTU RS-485 network. Other Campbell Scientific data loggers can use an MD485 multidrop interface to read the RS-485 output. Refer to the MD485 manual for information about using the MD485.

A CR6 or CR1000X data logger programmed as a Modbus Master can retrieve the values stored in the Input Registers ([Modbus register map](#) (p. 12)). To do this, the CRBasic program requires

`SerialOpen()` followed by `ModbusMaster()`. The `SerialOpen` instruction has the following syntax:

```
SerialOpen (ComPort, Baud, Format, TXDelay, BufferSize, Mode)
```

The **Format** parameter is typically set to logic 1 low; even parity, one stop bit, 8 data bits. The **Mode** parameter should configure the ComPort as RS-485 half-duplex, transparent.

The `ModbusMaster()` instruction has the following syntax:

```
ModbusMaster (Result, ComPort, Baud, Addr, Function, Variable, Start, Length,
Tries, TimeOut, [ModbusOption])
```

The **Addr** parameter must match the sensor Modbus address. The Modbus address must be unique and may need to be changed if another sensor on the terminal has the same address. The default value for the Modbus address is the last two digits of the sensor serial number, with exceptions for serial numbers ending in 00 and 01. These exceptions default to Modbus addresses of 110 and 111, respectively. The default Modbus address and serial settings are printed on the cable. To collect all of the CS250DM values, the **Start** parameter needs to be 1 and the **Length** parameter needs to be 5. **ModbusOption** is an optional parameter described in the *CRBasic Editor* Help.

7.3 Siting

The general EPA guidance for standard meteorological stations is to locate the sensor over an open, level area at least 9 m (29.5 ft) in diameter. The surface should be covered by short grass or the natural earth surface where grass does not grow. Sensors should be located at a distance of at least ten times the height of any nearby obstruction and at least 30 m (98.4 ft) from large, paved areas. Sensors should be protected from thermal radiation and adequately ventilated. Protect the filter at the top of the sensor from exposure to liquid water.

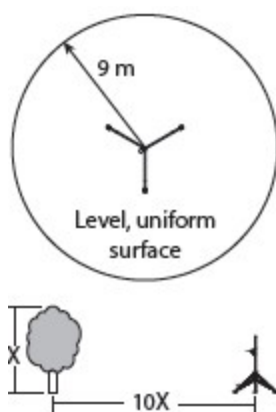


FIGURE 7-1. Clearances

The sensor should be installed at a standard measurement height which varies depending on the guides being used:

- 1.5 m (4.92 ft) (AASC)
- 1.25 to 2.0 m (4.1 to 6.5 ft) (WMO)
- 2.0 m (6.5 ft) (EPA)

When used in the field, the CS250DM must be housed in a radiation shield. Typically, the RAD06 6-plate radiation shield is used.

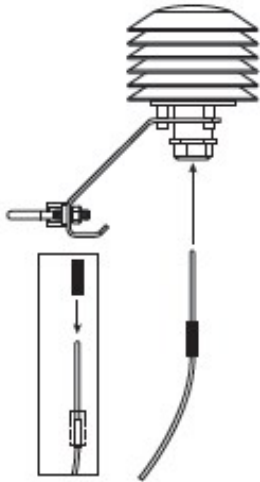
The white color of these shields reflects solar radiation, and the louvered construction allows air to pass freely through, thereby keeping the sensor at or near ambient temperature. The RAD06 uses a double-louvered design that offers improved sensor protection from insect intrusion and driving rain and snow. In addition, compared to shields of a similar appearance, the RAD shields have lower self-heating in bright sunlight combined with low wind speeds giving a better measurement. The RAD06 attaches to a crossarm, mast, or pipe with a 2.5 to 5.3 cm (1.0 to 2.1 inch) outer diameter.

Tools required for installing a radiation shield to a tripod or tower include:

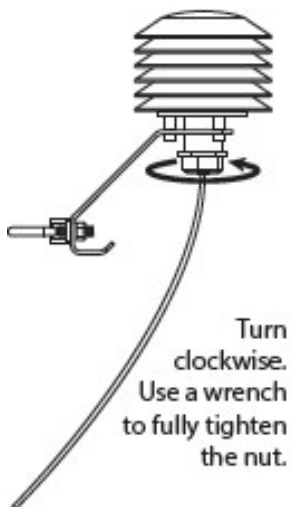
- adjustable wrench (to suit 12 mm (1/2 in) nuts)
- small screwdriver provided with data logger
- small Phillips screwdriver
- UV-resistant cable ties
- small pair of diagonal-cutting pliers
- adjustable wrench with a minimum 50 mm (2 in) jaw size.

7.4 Installation in a radiation shield

1. Insert the CS250DM in the sleeve.
2. Loosen the nut on the entry gland at the bottom of the shield.
3. Insert the sensor into the gland.



4. First tighten the nut on the gland by hand until the sensor is held firmly in place. Then use the large adjustable wrench to further tighten the gland by 1/2 to 1 turn.



7.5 Mount the shield

1. Attach the radiation shield to the tripod mast, crossarm, or tower leg using the supplied U-bolt or band clamp.
2. Route the cable to the data logger, and secure the cable to the mounting structure using cable ties.

CAUTION:

Failure to secure the cable can lead to breakage of the wires due to fatigue caused by blowing back and forth in the wind.

7.6 Long cable lengths

Digital data transfer eliminates offset errors due to cable lengths. However, digital communications can break down when cables are too long, resulting in either no response from the sensor or corrupted readings. Maximum cable lengths depend on the number of sensors connected, the type of cable used, and the environment of the application. Follow these guidelines when using long cables:

- Use low capacitance, low resistance, screened cable (as supplied by Campbell Scientific) to reach distances of several hundred meters.
- Ensure that the power ground wire has low resistance and is connected to the same ground reference as the data logger control terminals.
- Be aware that daisy-chaining sensors reduces the maximum cable length roughly in proportion to the number of sensors connected in parallel.

7.7 Modbus register map

[Table 7-2](#) (p. 12) provides the input register map (function code 4) and [Table 7-3](#) (p. 13) provides the holding register map (functions 3, 6, and 16).

Table 7-2: Input register map			
Input register	Value	Modbus data type	Description
30001	Serial number	Float ¹	Specifies the sensor serial number assigned by the factory
30003	Temperature	Float ¹	The stored value is in degrees Celsius.

Table 7-2: Input register map			
Input register	Value	Modbus data type	Description
30005	Counter	Float ¹	The counter provides an indicator that the sensor is actively taking measurements. This value will increment once per measurement, resetting to 0 after 10,000.
30007	Sensor status	Float ¹	0 = good 1 = open/short
30009	Temperature range check	Float ¹	0 = good/in range 1 = out of range
¹ Modbus float is a 32-bit integer.			

Table 7-3: Holding register map			
Holding register	Value	Modbus data type	Description
40001	Modbus address	Unsigned short ¹	Modbus device address (1 to 247)
40002	Baud rate	Unsigned short ¹	1 = 9600 bps 2 = 19200 bps 3 = 38400 bps 4 = 57600 bps 5 = 115200 bps
40003	Parity	Unsigned short ¹	0 = no parity 1 = odd 2 = even
40004	Stop bit	Unsigned short ¹	1 = 1 stop bit 2 = 2 stop bits
40005	Termination resistor	Unsigned short ¹	0 = off/disable 1 = on/enable
¹ Unsigned short data is a 16-bit positive integer.			

7.8 Device Configuration Utility

Device Configuration Utility is bundled in Campbell Scientific data logger support software and is available, at no cost, from www.campbellsci.com/downloads. Use **Device Configuration Utility** to change the CS250DM settings, view stored values, and update the CS250DM operating system (OS). It also provides CS250DM wiring information.

Connection to **Device Configuration Utility** requires a USB-to-RS-485 adapter and a 12 VDC power supply. Use the following procedure for connecting to **Device Configuration Utility**.

1. Open **Device Configuration Utility**.
2. Under **Device Type**, click **CS250DM**.
3. Follow steps listed under **Connecting to a CM250DM with a USB to RS-485 adapter**.

The screenshot shows the Device Configuration Utility software interface. The left sidebar has a 'Device Type' dropdown set to 'cs25' and a 'Sensor' list with 'CS250DM' selected. The main window title is 'CS250DM | Send OS'. The content area is titled 'Connecting to a CS250DM with a USB to RS-485 adapter' and includes two notes and a five-step procedure. Below this is a 'CS250DM Wiring Information' table. At the bottom left, there are settings for 'Connection Type' (Direct), 'Communication Port' (COM1), and 'Baud Rate' (115200), with a 'Connect' button.

Connecting to a CS250DM with a USB to RS-485 adapter

- Note: The CS250DM is not powered over USB for configuration. A 12 Vdc power supply is required.
- Note: The CS250DM sensor will look for Device Configuration Utility communications for the about 8 seconds after power up. If Device Configuration Utility communication packets are not received within 8 seconds, the sensor will reconfigure to Modbus communications according to the settings stored in the Holding Registers. To reset the device for Device Configuration Utility communication, the sensor must be power cycled.

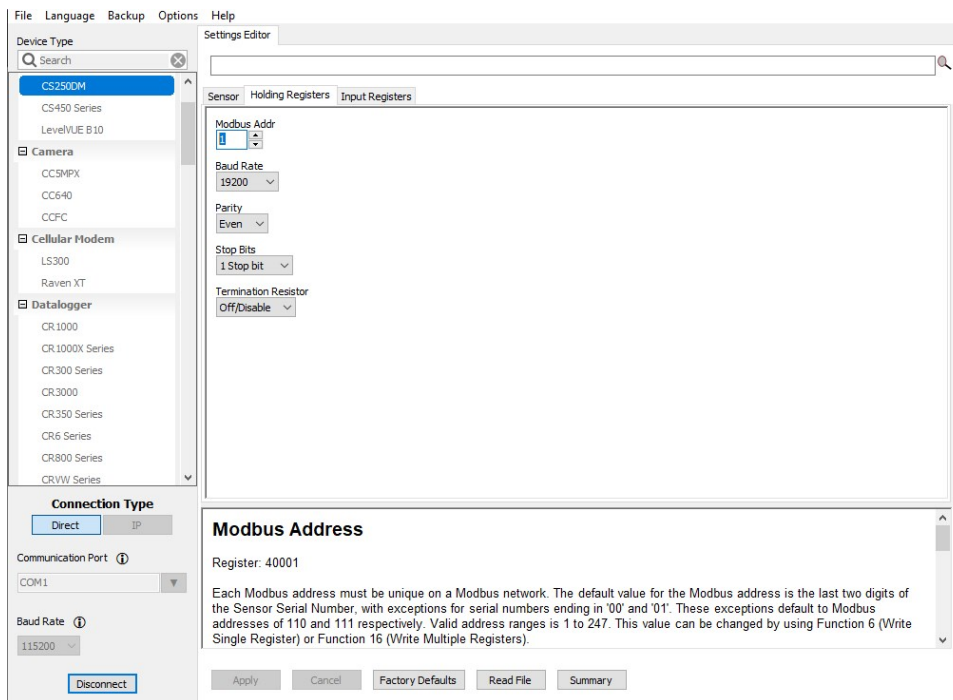
1. Connect a USB to RS-485 adapter to your computer configured at 115200 Baud Rate, 8 data bits, no parity, and 1 stop bit.
2. Connect the CS250DM to the RS-485 adapter (see Wiring Information below).
3. Select the correct Communication Port in the left panel.
4. Click the Connect button.
5. Apply 12Vdc to the CS250DM.

CS250DM Wiring Information

CS250DM Standard Cable	CS250DM Shielded Cable	When connecting to CSI Datalogger	Signal	M12 Pin
Brown	Red	Power Out (12V)	12Vdc Power	1
White w/Brown	Black	Power Ground (G)	Ground (Power)	4
Blue	Green	CS C1*	RS-485 A- (D0)	3
White w/Blue	White	CS C2*	RS-485 B+ (D1)	2
Green	Yellow	(G)	RS-485 Common (Signal Ground)	5
	Clear	Power Ground (G)	Shield	

* As configured in datalogger program.

- Click the **Holding Registers** tab to change settings. The default Modbus address and serial settings are printed on the cable. The Modbus address must be unique and may need to be changed if another sensor on the terminal has the same address. The default value for the Modbus address is the last two digits of the sensor serial number, with exceptions for serial numbers ending in 00 and 01. These exceptions default to Modbus addresses of 110 and 111, respectively. Most Modbus systems use the default **Baud Rate**, **Parity**, **Stop Bits**, and **Termination Resistor** values.



- Click the **Input Registers** tab to view the stored values.

8. Maintenance and troubleshooting

NOTE:

All factory repairs and recalibrations require a returned material authorization (RMA) and completion of the "Statement of Product Cleanliness and Decontamination" form. Refer to the [Assistance](#) page at the end of this manual for more information.

8.1 Maintenance

The CS250DM requires minimal maintenance. Periodically check cabling for proper connections, signs of damage, and possible moisture intrusion. Check the radiation shield monthly to make sure it is free from dust and debris. To clean the shield, first remove the sensor. Dismount the shield. Brush all loose dirt off. If more effort is needed, use warm, soapy water and a soft cloth or brush to thoroughly clean the shield. Allow the shield to dry before remounting.

8.2 Troubleshooting

Symptom: Temperature is NAN, -INF, -9999, -273

Verify wiring of sensor to the data logger; cross-reference data logger program or the measurement system wiring diagram.

Symptom: Incorrect Temperature

Check the cable for signs of damage and possible moisture intrusion.

Symptom: Unstable Temperature

Make sure the shield and ground wires are connected to data logger ground, and the data logger is properly grounded.

Appendix A. Importing *Short Cut* code into *CRBasic Editor*


Short Cut creates a .DEF file that contains wiring information and a program file that can be imported into the *CRBasic Editor*. By default, these files reside in the C:\campbellsci\SCWin folder.

Import *Short Cut* program file and wiring information into *CRBasic Editor*:


1. Create the *Short Cut* program. After saving the *Short Cut* program, click the **Advanced** tab then the **CRBasic Editor** button. A program file with a generic name will open in CRBasic. Provide a meaningful name and save the CRBasic program. This program can now be edited for additional refinement.

NOTE:

Once the file is edited with *CRBasic Editor*, *Short Cut* can no longer be used to edit the program it created.

2. To add the *Short Cut* wiring information into the new CRBasic program, open the .DEF file located in the C:\campbellsci\SCWin folder, and copy the wiring information, which is at the beginning of the .DEF file.
3. Go into the CRBasic program and paste the wiring information into it.
4. In the CRBasic program, highlight the wiring information, right-click, and select **Comment Block**. This adds an apostrophe (') to the beginning of each of the highlighted lines, which instructs the data logger compiler to ignore those lines when compiling. The **Comment Block** feature is demonstrated at about 5:10 in the [CRBasic | Features](#) video .

Limited warranty

Products manufactured by Campbell Scientific are warranted by Campbell Scientific to be free from defects in materials and workmanship under normal use and service for twelve months from the date of shipment unless otherwise specified on the corresponding product webpage. See Product Details on the Ordering Information pages at www.campbellsci.com. Other manufacturer's products, that are resold by Campbell Scientific, are warranted only to the limits extended by the original manufacturer.


Refer to www.campbellsci.com/terms#warranty for more information.

CAMPBELL SCIENTIFIC EXPRESSLY DISCLAIMS AND EXCLUDES ANY IMPLIED WARRANTIES OF MERCHANTABILITY OR FITNESS FOR A PARTICULAR PURPOSE. Campbell Scientific hereby disclaims, to the fullest extent allowed by applicable law, any and all warranties and conditions with respect to the Products, whether express, implied or statutory, other than those expressly provided herein.

Assistance

Products may not be returned without prior authorization.

Products shipped to Campbell Scientific require a Returned Materials Authorization (RMA) or Repair Reference number and must be clean and uncontaminated by harmful substances, such as hazardous materials, chemicals, insects, and pests. Please complete the required forms prior to shipping equipment.

Campbell Scientific regional offices handle repairs for customers within their territories. Please see the back page for the Global Sales and Support Network or visit www.campbellsci.com/contact  to determine which Campbell Scientific office serves your country.

To obtain a Returned Materials Authorization or Repair Reference number, contact your CAMPBELL SCIENTIFIC regional office. Please write the issued number clearly on the outside of the shipping container and ship as directed.

For all returns, the customer must provide a "Statement of Product Cleanliness and Decontamination" or "Declaration of Hazardous Material and Decontamination" form and comply with the requirements specified in it. The form is available from your CAMPBELL SCIENTIFIC regional office. Campbell Scientific is unable to process any returns until we receive this statement. If the statement is not received within three days of product receipt or is incomplete, the product will be returned to the customer at the customer's expense. Campbell Scientific reserves the right to refuse service on products that were exposed to contaminants that may cause health or safety concerns for our employees.

Safety

DANGER — MANY HAZARDS ARE ASSOCIATED WITH INSTALLING, USING, MAINTAINING, AND WORKING ON OR AROUND TRIPODS, TOWERS, AND ANY ATTACHMENTS TO TRIPODS AND TOWERS SUCH AS SENSORS, CROSSARMS, ENCLOSURES, ANTENNAS, ETC. FAILURE TO PROPERLY AND COMPLETELY ASSEMBLE, INSTALL, OPERATE, USE, AND MAINTAIN TRIPODS, TOWERS, AND ATTACHMENTS, AND FAILURE TO HEED WARNINGS, INCREASES THE RISK OF DEATH, ACCIDENT, SERIOUS INJURY, PROPERTY DAMAGE, AND PRODUCT FAILURE. TAKE ALL REASONABLE PRECAUTIONS TO AVOID THESE HAZARDS. CHECK WITH YOUR ORGANIZATION'S SAFETY COORDINATOR (OR POLICY) FOR PROCEDURES AND REQUIRED PROTECTIVE EQUIPMENT PRIOR TO PERFORMING ANY WORK.

Use tripods, towers, and attachments to tripods and towers only for purposes for which they are designed. Do not exceed design limits. Be familiar and comply with all instructions provided in product manuals. Manuals are available at www.campbellsci.com. You are responsible for conformance with governing codes and regulations, including safety regulations, and the integrity and location of structures or land to which towers, tripods, and any attachments are attached. Installation sites should be evaluated and approved by a qualified engineer. If questions or concerns arise regarding installation, use, or maintenance of tripods, towers, attachments, or electrical connections, consult with a licensed and qualified engineer or electrician.

General

- Protect from over-voltage.
- Protect electrical equipment from water.
- Protect from electrostatic discharge (ESD).
- Protect from lightning.
- Prior to performing site or installation work, obtain required approvals and permits. Comply with all governing structure-height regulations.
- Use only qualified personnel for installation, use, and maintenance of tripods and towers, and any attachments to tripods and towers. The use of licensed and qualified contractors is highly recommended.
- Read all applicable instructions carefully and understand procedures thoroughly before beginning work.
- Wear a **hardhat** and **eye protection**, and take **other appropriate safety precautions** while working on or around tripods and towers.
- **Do not climb** tripods or towers at any time, and prohibit climbing by other persons. Take reasonable precautions to secure tripod and tower sites from trespassers.
- Use only manufacturer recommended parts, materials, and tools.

Utility and Electrical

- **You can be killed** or sustain serious bodily injury if the tripod, tower, or attachments you are installing, constructing, using, or maintaining, or a tool, stake, or anchor, come in **contact with overhead or underground utility lines**.
- Maintain a distance of at least one-and-one-half times structure height, 6 meters (20 feet), or the distance required by applicable law, **whichever is greater**, between overhead utility lines and the structure (tripod, tower, attachments, or tools).
- Prior to performing site or installation work, inform all utility companies and have all underground utilities marked.
- Comply with all electrical codes. Electrical equipment and related grounding devices should be installed by a licensed and qualified electrician.
- Only use power sources approved for use in the country of installation to power Campbell Scientific devices.

Elevated Work and Weather

- Exercise extreme caution when performing elevated work.
- Use appropriate equipment and safety practices.
- During installation and maintenance, keep tower and tripod sites clear of un-trained or non-essential personnel. Take precautions to prevent elevated tools and objects from dropping.
- Do not perform any work in inclement weather, including wind, rain, snow, lightning, etc.

Maintenance

- Periodically (at least yearly) check for wear and damage, including corrosion, stress cracks, frayed cables, loose cable clamps, cable tightness, etc. and take necessary corrective actions.
- Periodically (at least yearly) check electrical ground connections.

Internal Battery

- Be aware of fire, explosion, and severe-burn hazards.
- Misuse or improper installation of the internal lithium battery can cause severe injury.
- Do not recharge, disassemble, heat above 100 °C (212 °F), solder directly to the cell, incinerate, or expose contents to water. Dispose of spent batteries properly.

WHILE EVERY ATTEMPT IS MADE TO EMBODY THE HIGHEST DEGREE OF SAFETY IN ALL CAMPBELL SCIENTIFIC PRODUCTS, THE CUSTOMER ASSUMES ALL RISK FROM ANY INJURY RESULTING FROM IMPROPER INSTALLATION, USE, OR MAINTENANCE OF TRIPODS, TOWERS, OR ATTACHMENTS TO TRIPODS AND TOWERS SUCH AS SENSORS, CROSSARMS, ENCLOSURES, ANTENNAS, ETC.



Global Sales & Support Network

A worldwide network to help meet your needs



Campbell Scientific regional offices

Australia

Location: Garbutt, QLD Australia
Phone: 61.7.4401.7700
Email: info@campbellsci.com.au
Website: www.campbellsci.com.au

Brazil

Location: São Paulo, SP Brazil
Phone: 11.3732.3399
Email: vendas@campbellsci.com.br
Website: www.campbellsci.com.br

Canada

Location: Edmonton, AB Canada
Phone: 780.454.2505
Email: dataloggers@campbellsci.ca
Website: www.campbellsci.ca

China

Location: Beijing, P. R. China
Phone: 86.10.6561.0080
Email: info@campbellsci.com.cn
Website: www.campbellsci.com.cn

Costa Rica

Location: San Pedro, Costa Rica
Phone: 506.2280.1564
Email: info@campbellsci.cc
Website: www.campbellsci.cc

France

Location: Vincennes, France
Phone: 0033.0.1.56.45.15.20
Email: info@campbellsci.fr
Website: www.campbellsci.fr

Germany

Location: Bremen, Germany
Phone: 49.0.421.460974.0
Email: info@campbellsci.de
Website: www.campbellsci.de

India

Location: New Delhi, DL India
Phone: 91.11.46500481.482
Email: info@campbellsci.in
Website: www.campbellsci.in

South Africa

Location: Stellenbosch, South Africa
Phone: 27.21.8809960
Email: sales@campbellsci.co.za
Website: www.campbellsci.co.za

Spain

Location: Barcelona, Spain
Phone: 34.93.2323938
Email: info@campbellsci.es
Website: www.campbellsci.es

Thailand

Location: Bangkok, Thailand
Phone: 66.2.719.3399
Email: info@campbellsci.asia
Website: www.campbellsci.asia

UK

Location: Shepshed, Loughborough, UK
Phone: 44.0.1509.601141
Email: sales@campbellsci.co.uk
Website: www.campbellsci.co.uk

USA

Location: Logan, UT USA
Phone: 435.227.9120
Email: info@campbellsci.com
Website: www.campbellsci.com